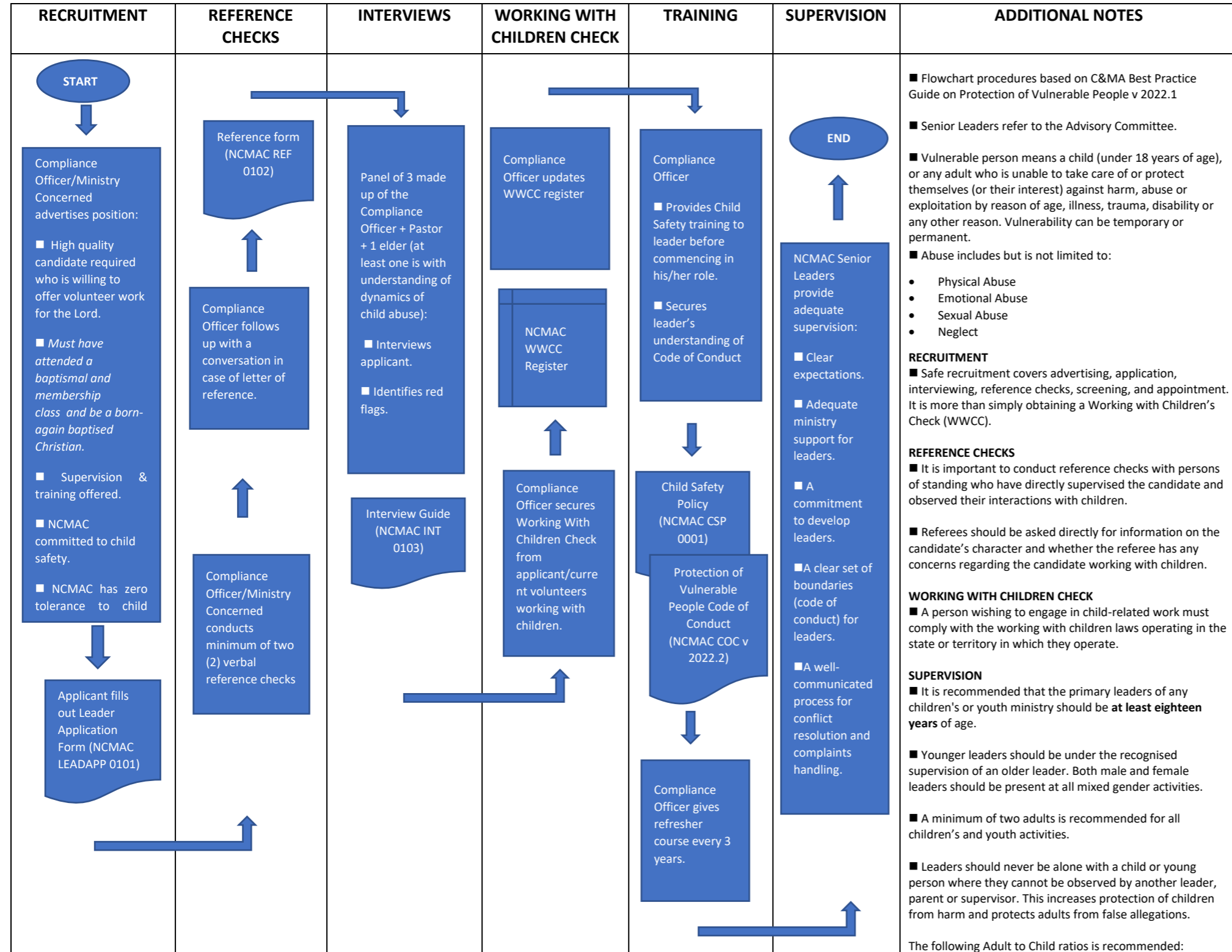


**Northern Christian Missionary Alliance Church (NCMAC)**  
**PROTECTION OF VULNERABLE PEOPLE POLICY (FORMERLY CHILD SAFETY POLICY)**  
**01 SAFE PEOPLE**



LEVEL	CONTENT	PREPARED BY	REVIEWED BY	DATE
New	01 SAFE PEOPLE PROCEDURE FLOWCHART (C&MA Best Practice Guide 2020 Child Safety Policies v.10)	Compliance Officer Min Laurinaria	NCMAC Advisory Committee	26/02/2022
REV 1	Revised recruitment policy (Applicant must have attended baptismal & membership class & must be a born-again baptised Christian).	Compliance Officer Min Laurinaria	NCMAC Advisory Committee	24/08/2022
REV 2	Flowchart Procedures based on updated C&MA Best Practice Guide on Protection of Vulnerable People v 2022.1	Compliance Officer Min Laurinaria	NCMAC Advisory Committee	28/05/2023
REV 2	Protection of Vulnerable People Code of Conduct v2022.2	Compliance Officer Min Laurinaria	NCMAC Advisory Committee	28/05/2023

AGES	RATIO
Birth to 2 years	1:4
2-3 years	1:5 (1:4 in Victoria)
Above 3 years	1:11 (1:10 in NSW, Tas & WA)

LEVEL	CONTENT	PREPARED BY	REVIEWED BY	DATE
New	01 SAFE PEOPLE PROCEDURE FLOWCHART (C&MA Best Practice Guide 2020 Child Safety Policies v.10)	Compliance Officer Min Laurinaria	NCMAC Advisory Committee	26/02/2022
REV 1	Revised recruitment policy (Applicant must have attended baptismal & membership class & must be a born-again baptised Christian).	Compliance Officer Min Laurinaria	NCMAC Advisory Committee	24/08/2022
REV 2	Flowchart Procedures based on updated C&MA Best Practice Guide on Protection of Vulnerable People v 2022.1	Compliance Officer Min Laurinaria	NCMAC Advisory Committee	28/05/2023
REV 2	Protection of Vulnerable People Code of Conduct v2022.2	Compliance Officer Min Laurinaria	NCMAC Advisory Committee	28/05/2023